

**YOUR STORE 2.0**

# TWINTECH

**DIGITAL TWIN READINESS SPECIALISTS**

## WHAT IF YOUR **STORE** HAD A **TWIN** ?

**A digital twin:** A faithful digital reproduction of your unique space.

Whether customers walk in or log in, they can shop the same way.  
You can also test and improve the in-store shopping experience.

TwinTech - Build Smarter with Data and Digital Twins



**GUESSWORK IS COSTING THE INDUSTRY BILLIONS.**

# BLIND SPOTS IN TRADITIONAL RETAIL

Traditional retail often relies on guesswork, rather than analysing data about how shoppers actually move and buy.

With real-time insights, stores gain opportunities to better serve customers - both online and off.

**A MIRROR THAT NEVER BLINKS**

# MEET THE DIGITAL TWIN

A digital twin is a virtual  
replica of a physical store,

Your dashboards are  
dynamically updated  
with real-time data.

This living model mirrors  
everything happening in real life.



**Let customers  
explore:**  
Immersive  
online shopping  
experiences



**Foresee  
threats:**  
Preemptively  
avoid risks



**THERE ARE TWO PRIMARY MODES OF DIGITAL TWIN FOR RETAIL: MODE 1)**

## **3D VIRTUALISATION WITH EMBEDDED E-COMMERCE...?**



**Consumer twins:** Lightweight, immersive environments. These are ideal for curated spaces like shops, galleries, showrooms and museums.

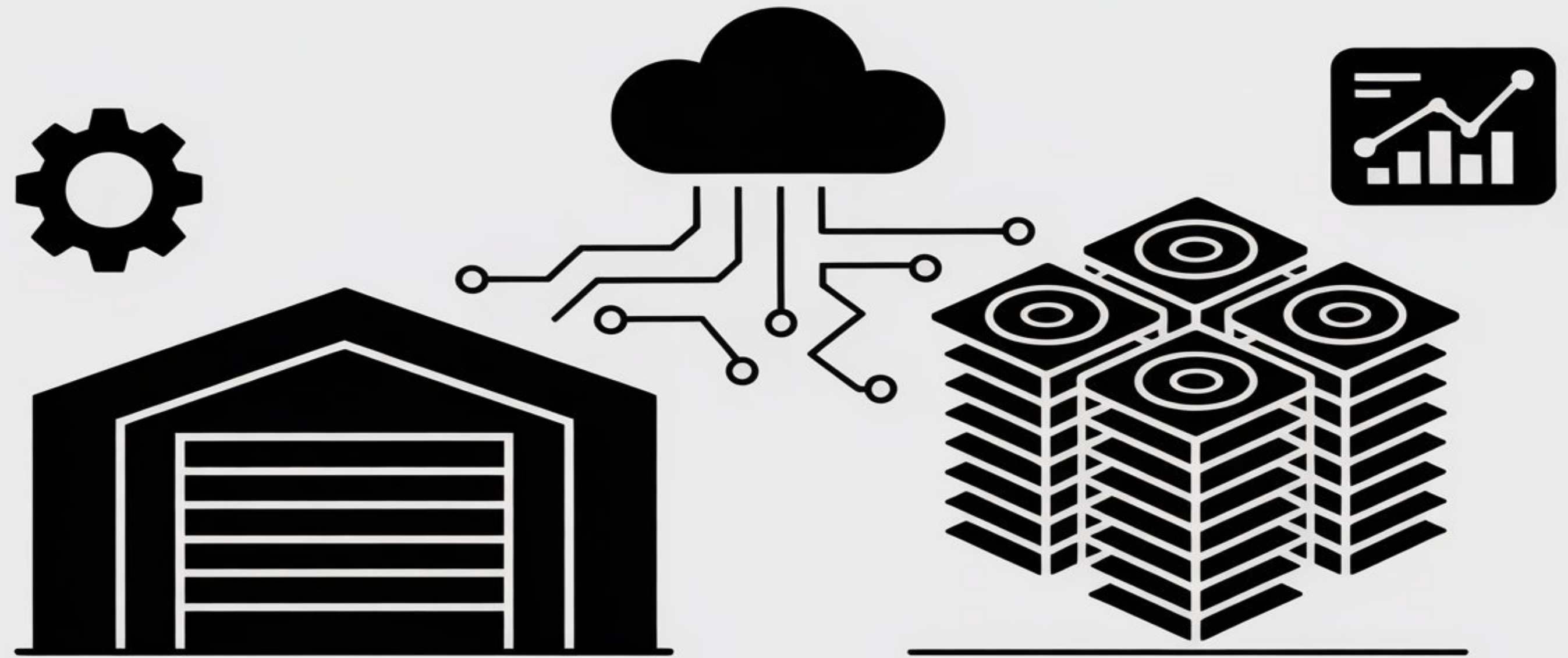
They're fast to deploy, highly affordable, and optimised for experience, reach, and ecommerce integration

TwinTech - Build Smarter with Data and Digital Twins



## THERE ARE TWO PRIMARY MODES OF DIGITAL TWIN FOR RETAIL: MODE 2)

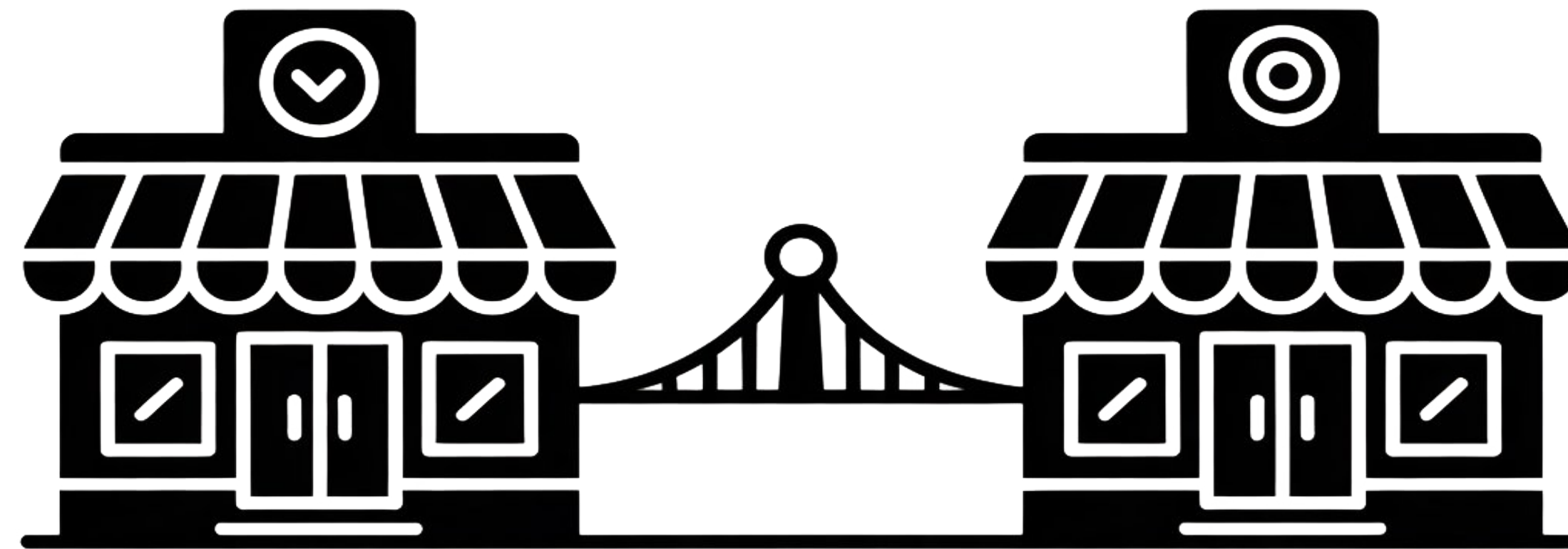
...OR FULL  
DIGITAL  
REPLICAL?



**Infrastructure twins:** More complex and data-intensive. Designed for logistics hubs, utilities, and high-volume retail infrastructure, these twins power long-term planning, predictive maintenance, and operational insight. They require deeper integration — but deliver significant economic returns over time.

**PHYSICAL AND DIGITAL PERFECTLY IN SYNC.**

## BRIDGING THE PHYSICAL AND THE DIGITAL



Sensors and store systems feed the twin with live data giving you **a real-time sync between physical and digital.**

Managers gain a holistic, live view of operations, providing powerful insights that help them **make optimal decisions.**

## **STATE-OF-THE-ART VIRTUALISATION.**

A person with long hair is wearing a VR headset and interacting with a virtual environment. They are pointing their right index finger upwards. The background shows a virtual store with shelves, a shopping cart icon, and a person icon. The scene is rendered in a semi-transparent, green-tinted style.

**NOW WE CAN EXTEND  
THE REAL-TIME MIRROR  
RIGHT INTO YOUR  
CUSTOMER'S HANDS**

For shoppers, digital twins faithfully recreate the customer journey. Customers can explore your store virtually with the same ease and familiarity as in person.

The trust and loyalty you've earned through your physical presence carries over seamlessly to the online realm.



**YOUR STORE, ANYWHERE.**

# **GIVE YOUR CUSTOMERS A SEAMLESS, IMMERSIVE SHOPPING EXPERIENCE**

Your digital twin store can be easily embedded on your website or shared via social media, expanding your reach far beyond physical foot traffic.

Digital that feels like walking into the store...

Let customers shop your store anywhere, any time. Our systems ensure continuously synchronised layout and merchandising online and offline.



**LEAN, FAST, WASTE-FREE RETAIL.**



# **BOOSTING EFFICIENCY & CUTTING COSTS**

**Digital twins help stores run leaner and smarter.**

Solving issues virtually before they become real problems lets your team save time and reduce waste.

Bottom line? significant savings



**TEST LAYOUTS BEFORE YOU MAKE CHANGES IRL**

# OPTIMIZING LAYOUTS & LOGISTICS

Managers can experiment with store layouts and processes in the twin without touching a single shelf.

**The result is a store continuously refined for peak performance.**



**DIGITAL TWINNING ELEVATES CUSTOMERS' EXPERIENCE.**

# ENHANCING CUSTOMER UX



By analysing real-time shopper behavior, the twin reveals which areas draw attention and which are overlooked.

Virtual stores can include digital equivalents of in-store services. This opens possibilities for personalised shopping experiences, virtual try-ons, and even real-time assistance.

Retailers can use these insights to adjust layouts or tailor in-store promotions on the fly, creating a more personalised, engaging journey that delights customers.

**Immersive digital twin experiences are a proven driver of sales!**

Research indicates that VR leads to better customer engagement and higher purchase rates.

**TwinTech - Build Smarter with Data and Digital Twins**



**THE DIGITAL TWIN MARKET IS GAINING MOMENTUM**

# RETAIL IS EMBRACING DIGITAL TWINS



**Adoption is surging!**  
a growing cohort of retail  
executives have already  
deployed digital twins

The global digital twin market is projected to grow from €16.5 B in 2024 to over €242 B by 2032. 59% of companies plan to integrate digital twins into their operations by 2028; a sign that this technology is quickly moving into the mainstream of retail.

**TWIN IT AND STAY CUTTING-EDGE.**

# THE ROAD AHEAD

Industry leaders foresee a future where every store has a digital twin – both as a virtual space that shoppers can enjoy from the comfort of their couch, and as an operational tool to better plan merchandising and remotely manage operations.

**That future is closer than ever, with early adopters already seeing this vision come to life in their stores. The next step is yours: Are you ready to explore your store's digital twin and step into the future of retail?**